

2011 - 2012

NURSERY PRODUCTION
SURVEY

Scott Enebak
November 2012

2011 - 2012 Survey

- ✓ **Two page questionnaire sent in June to all available nursery addresses in 12 southern states.**
- ✓ **Follow up telephone calls made to maximize participation and update addresses.**
- ✓ **Creation of an Excel data file, then data summary using SAS.**
- ✓ **Report preparation.**

RESULTS

Questionnaire Response

- **Total of 72 surveys sent out.**
- **5 Surveys were returned as undeliverable.**
- **16 nurseries did not respond/return survey.**
- **51 surveys were used in data analysis.**
- **7 more surveys than last year.**

Conifer Production by Stock: 2011-12

	Conifer Production	Percent Change from Last Year
Bareroot Stock	718,344,000	+3
Container Stock	178,817,000	+70
Total Conifer	897,161,000	+12

*Greater Container Production Cooperation

Table 1, 2 & 3

Conifer Production: 2011-12

Species	Production	Percent Change from Last Year
Loblolly Pine	675,388,000	+ 9
Slash Pine	83,850,000	- 5
Longleaf Pine*	118,152,000	+ 62

- 91% of Loblolly pine produced is bareroot stock
- 96% of Slash pine produced is bareroot stock
- 96% of Longleaf pine produced is container stock

*Greater Container Production Cooperation

Table 1, 2 & 3

Conifer Production: 2011-12

	2011-12	2010-11	2009-10	2008-09	2008-07	2007-06
Loblolly	75%	80%	79%	83%	81%	81%
Slash	9%	11%	11%	10%	12%	13%
Longleaf	13%	5%	8%	6%	7%	5%
Total	98%	97%	98%	99%	99%	99%

*Greater Container Production Cooperation

Table 1, 2 & 3

Production by Ownership Category: CONIFERS

	2011-2012		2010-2011	
	Production	Percent	Production	Percent
Bareroot				
State	112.5 MM	15	97.5 MM	13
Private	303.1 MM	40	315.0 MM	44
Industry	337.5 MM	45	312.3 MM	43
Container				
State	11.3 MM	6	10.9 MM	12
Private*	150.2 MM	83	58.6 MM	66
Industry	20.0 MM	11	19.2 MM	22

Table 7

*Greater Container Production Cooperation

RESULTS – Hardwood Production

	Hardwood Production	Percent Change from Last Year
Bareroot Stock	34,896,000	+14
Container Stock	2,688,000	+2
Total Hardwood	37,584,000	+14

Table 4, 5 & 6

RESULTS - Hardwood production

	2011-12	% Change Previous yr	2010-11	% Change Previous yr
Eucalyptus	1,866,000	NA	NA	NA
Dogwood	538,000	-22	693,000	-17
Green Ash	2,852,000	+73	1,653,000	+40
Oak	23,521,000	+32	15,924,000	+05
Others	6,176,000	-48	11,930,000	+63
Pecan	840,000	+27	662,000	+26
Sweetgum	765,000	+35	565,000	-02
Sycamore	515,000	+20	429,000	-24
Walnut	113,000	-73	422,000	+09
Yellow Poplar	397,000	-36	625,000	+75
Total	37,584,000	+12	32,973,000	+22

Table 6

Hardwood Production Over Time

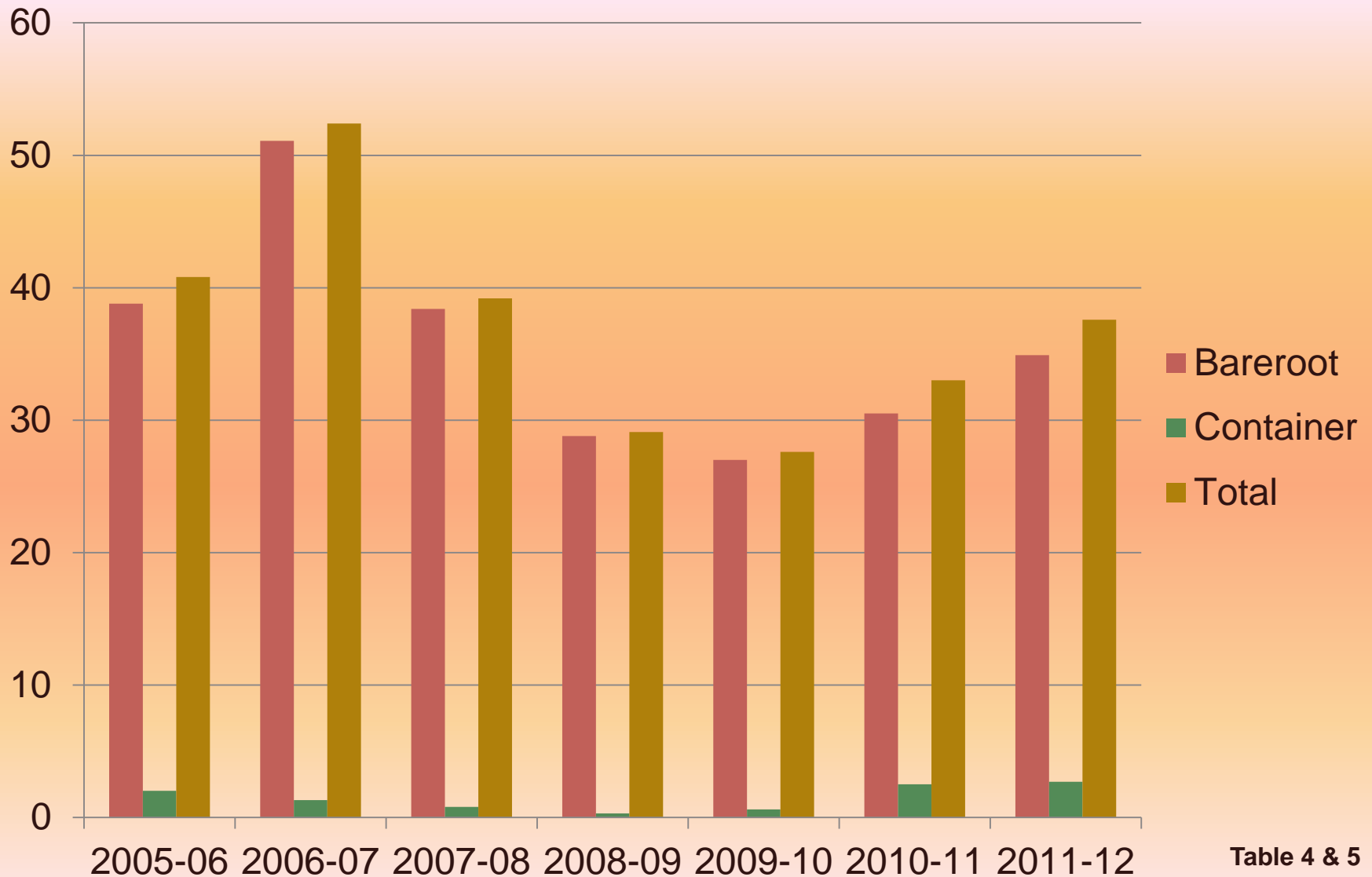


Table 4 & 5

Production by Ownership Category: Hardwoods

	2011-2012		2010-2011	
	Production	Percent	Production	Percent
Bareroot				
State	15.1 MM	43	9.0 MM	29
Private	16.1 MM	46	18.3 MM	60
Industry	3.7 MM	11	3.1 MM	11
Container				
State	4 MM	1	0 MM	0
Private	2.7 MM	99	2.5 MM	100
Industry	0 MM	0	0 MM	0

Table 7

Production by Ownership Category: ALL SPECIES

	2011-2012			10-11	09-10	08-09	07-08
State	123.8 MM	13%		13%	14%	13%	13%
Private	453.3 MM	48%		46%	50%	49%	14%
Industry	357.6 MM	38%		41%	36%	38%	73%
Total	934.7 MM			832.4	816.4	1,004.9	1,058.2

Table 10

Production by State - All species

	2011-2012 Production	Rank	% Change Previous Year	2010-2011 Production	Rank	% Change Previous Year
Alabama	88,207,000	4	15	76,415,000	6	-26
Arkansas	99,626,000	3	14	87,081,000	5	0
Florida	35,742,000	8	-21	45,392,000	8	-16
Georgia	303,297,000	1	36	223,523,000	1	10
Louisiana	30,989,000	9	36	22,861,000	10	-28
Mississippi	88,140,000	5	1	87,515,000	4	2
N. Carolina	63,233,000	7	19	53,019,000	7	-7
Oklahoma	4,420,000	12	-13	4,876,000	12	22
S. Carolina	109,362,000	2	0	109,880,000	2	11
Tennessee	7,142,000	11	17	6,087,000	11	6
Texas	78,907,000	6	-11	89,141,000	3	7
Virginia	25,870,000	10	-3	26,575,000	9	17

Table 11

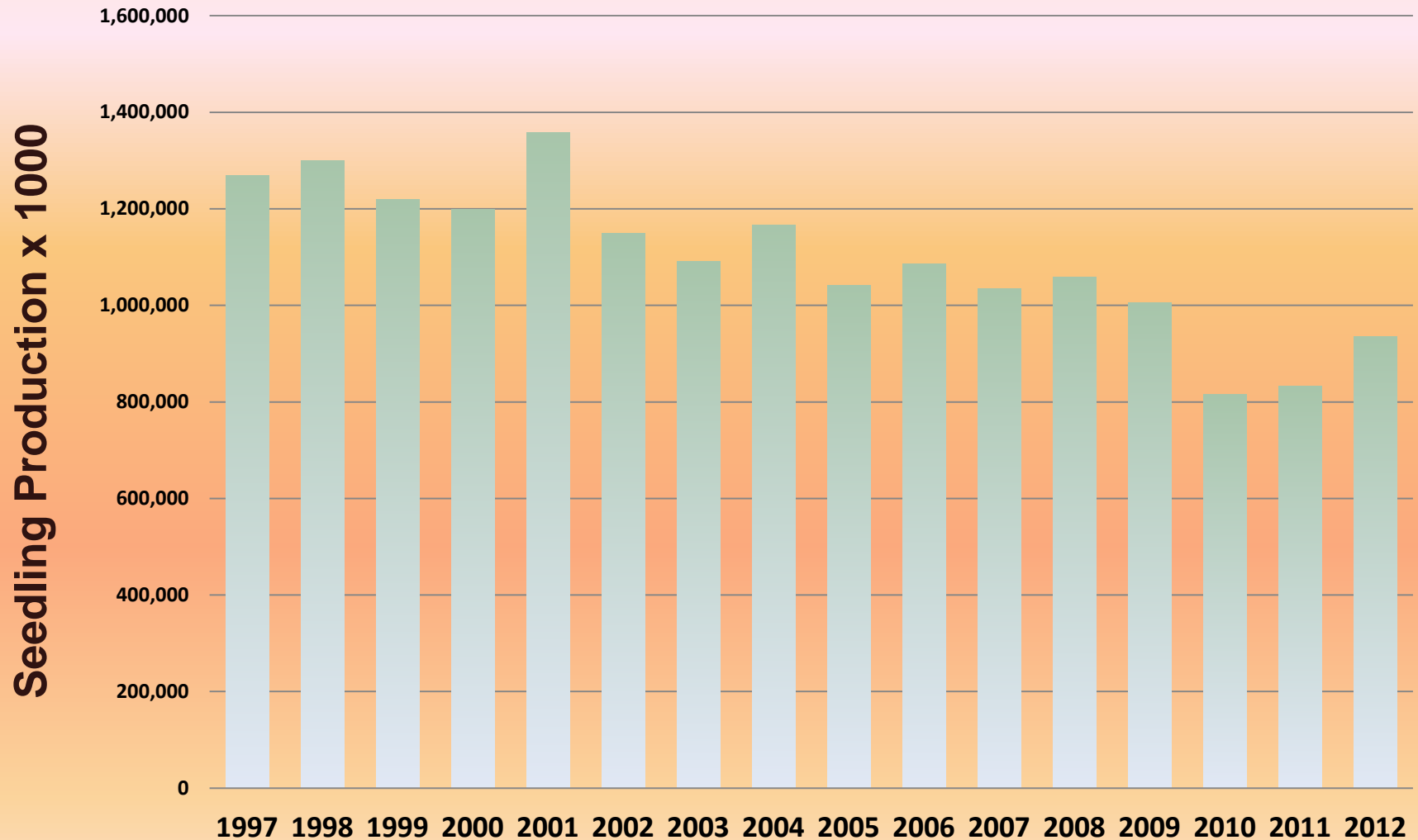
AU Southern Forest Nursery Management Cooperative Members

- All species & stock types

Nursery Cooperative Members comprise 84% of all regional seedling production.

Nursery Cooperative Members comprised 93% of bareroot seedlings and 47% of container seedlings.

Seedling Production: 1997-2012



Data from USFS, GFC and Nursery Cooperative

2010-11 Seedling Production Survey

- 1. Regional seedling production remained below the 1 Billion seedlings for the third year in a row at 934,745,000 million seedlings.**
- 2. Seedling production is up 12% overall across the region from last year.**
- 3. Regional bareroot conifer production was up 3% and hardwood production increased 12% from the 2010-2011 planting season.**
- 4. Georgia is the No. 1 seedling producer for conifer and Arkansas is the No. hardwood seedling producer.**
- 5. Nursery Cooperative members continue to lead seedling production in the region and have increased it's contribution to container stock production.**
- 6. Small private nurseries are responding more favorably to our requests for seedling production.**

